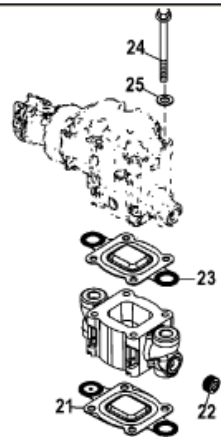
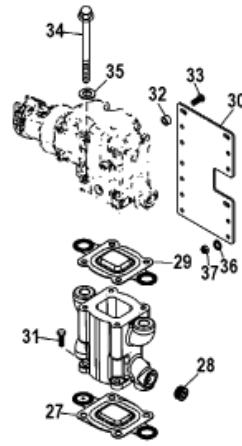


20



26



12581

Parts List

Ref	Class	Part	Description	Qty	Comment	Footnote
1		864308T01	MANIFOLD ASSEMBLY, Exhaust	2		
2	22	42861 1	FITTING, Pipe (.750-14 Brass)	4		
3	22	39072 1	PLUG, Pipe (.125-27 Brass)	2		
4	19	864689	PLUG, Expansion	2		
5	27	33395	GASKET	2		2,4
6	10	53728	SCREW, (.375-16 x 4.625)	8		
7	22	12524	PLUG, (.375-18 NPT)	1	(Port)	
8	22	92499T	FITTING, (45 Degree)	1	(Rear Facing Elbows)(Starboard)	
8	22	92499T	FITTING, (45 Degree)	2	(Forward Facing Elbows)	
9	22	63835	ELBOW, (45 Degree)(.375 NPTF x	1	(Starboard)	
10	22	806926A 1	ELBOW KIT, Drain	2		
11	22	806608A 1	PLUG KIT, Blue	2		
12	25	62706	O-RING, (.426 x .070)	2		
13	27	864850A 1	GASKET, Elbow(Restrictor)	2		
14		864591T02	ELBOW ASSEMBLY, Exhaust	2		
15	19	864689	PLUG, Expansion	4		
16	22	73379	PLUG, (.250-18)	1		
17	22	42861 1	FITTING, Pipe (.750-14 Brass)	1		
18	22	864623A 1	FITTING, Barb (With Tapped Fitting)	1	(Rear Facing Elbows)(Port)	
19	10	864665	SCREW, (.375-16 x 7.50)	8		
20		864929A 3	RISE EXTENSION KIT (3 Inch W	1		
21	27	864850A 1	GASKET, Restrictor	2		
22	22	42861 1	PLUG, Pipe (.750-14 Brass)	2		
23	27	864547A 1	GASKET, Full Flow	2		
24	10	864702	BOLT, (3/8-16 x 10-1/2 in.)	8		
25	12	34714	WASHER	8		
26		864908A 1	RISE EXTENSION KIT (6 Inch W	1		
27	27	864850A 1	GASKET, Restrictor	2		
28	22	42861 1	FITTING, Pipe (.750-14 Brass)	2		
29	27	864547A 1	GASKET, Full Flow	2		
30		818598T	BRACKET, Riser	1		
31	10	12244	SCREW, (.375-16 x 1.00)	8		
32	23	806981	SPACER	3		
33	10	28667	SCREW, (.250-20 x 1.00)	3		
34	10	864665	SCREW, (.375-16 x 7.50)	8		
35	12	34714	WASHER	8		
36	12	35462	WASHER, (.2656 x .625 x .0625)	4		
37	11	64015	NUT, (#8-32)	3		
38	22	16604	FITTING, (Straight), Barb	1		
-		863861A 1	LONGBLOCK ASSEMBLY	1		
-		861246A05	GASKET SET, Engine Overhaul	1		